

Great Lakes Crossing

Auburn Hills, MI

Blade Sign Concepts

8 March, 2010

REVISED 28 APRIL 2010

prepared by:



Selbert Perkins Design Collaborative
2 North Riverside Plaza, Suite 1475
Chicago, IL 60606

T 312.876.1839

F 312.993.0167

W www.selbertperkins.com

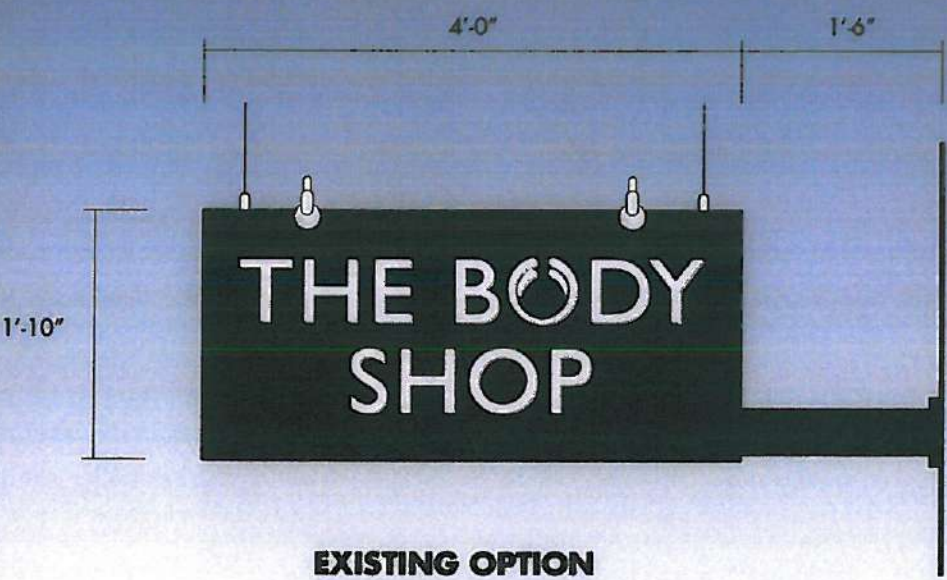
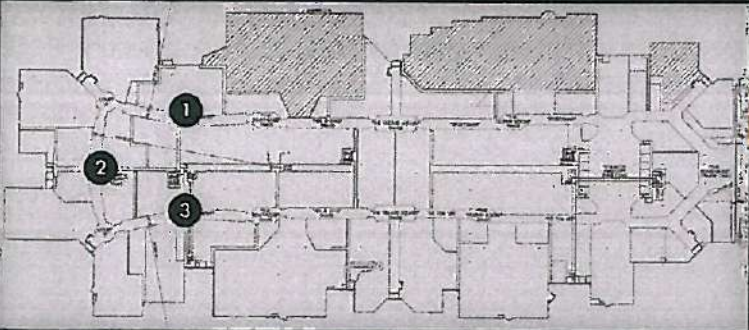
**NOTE: ALL IN-LINE RETAIL TENANTS ARE
REQUIRED TO PROVIDE BLADE SIGNS**



GREAT LAKES CROSSING
KEY PLAN / NOTES

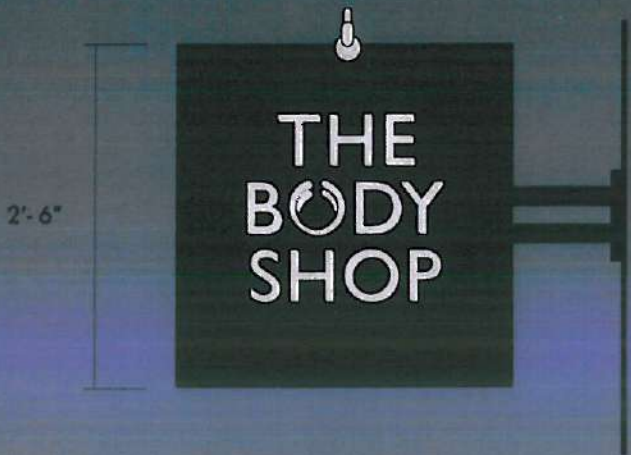
DISTRICTS 1, 2 & 3

DISTRICTS 1,2 & 3 - Blade Sign Options

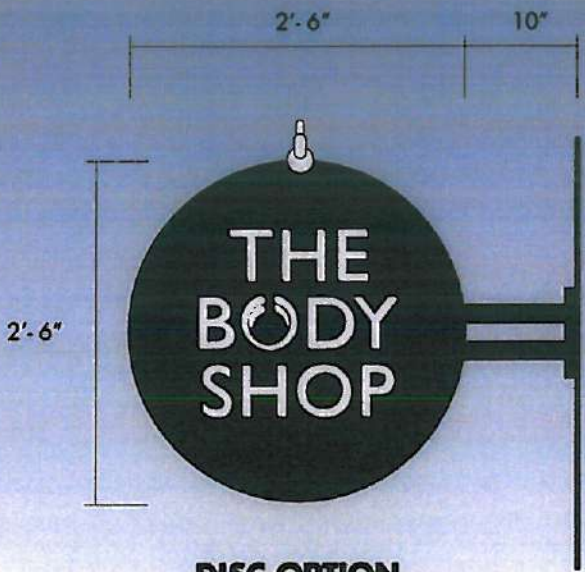


EXISTING OPTION

SCALE: 3/4"=1'-0"

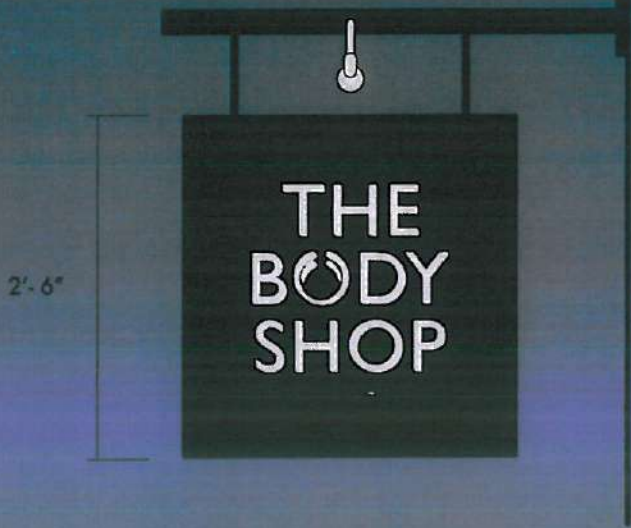


SQUARE OPTION
(FLAG MOUNTED)

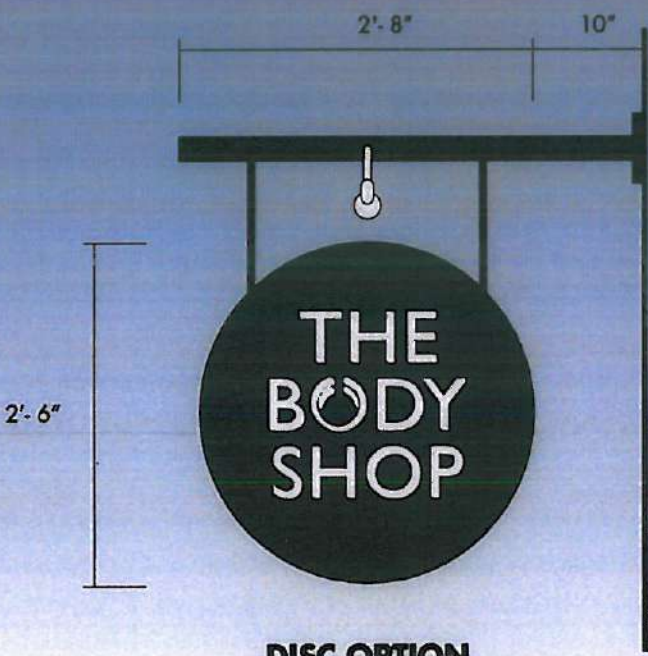


DISC OPTION
(FLAG MOUNTED)

FABRICATED METAL SIGN CABINET W/
SURFACE APPLIED DIMENSIONAL TEXT
EXTERNALLY LIT W/ MR16 LIGHT FIXTURE



SQUARE OPTION
(HANGING)



DISC OPTION
(HANGING)

FABRICATED METAL SIGN CABINET W/
SURFACE APPLIED DIMENSIONAL TEXT
EXTERNALLY LIT W/ MR16 LIGHT FIXTURE

BLADE SIGNS PER LANDLORD DESIGN CRITERIA
SIGNS PROVIDED BY TENANT AT TENANTS COST

3
8 March, 2010
REV 0428



THE BODY
SHOP

THE
BODY
SHOP

THE
BODY
SHOP

9'-2" AFF



SCALE: 3/4"=1'-0"

EXISTING OPTION

DISC OPTION
(FLAG MOUNTED)

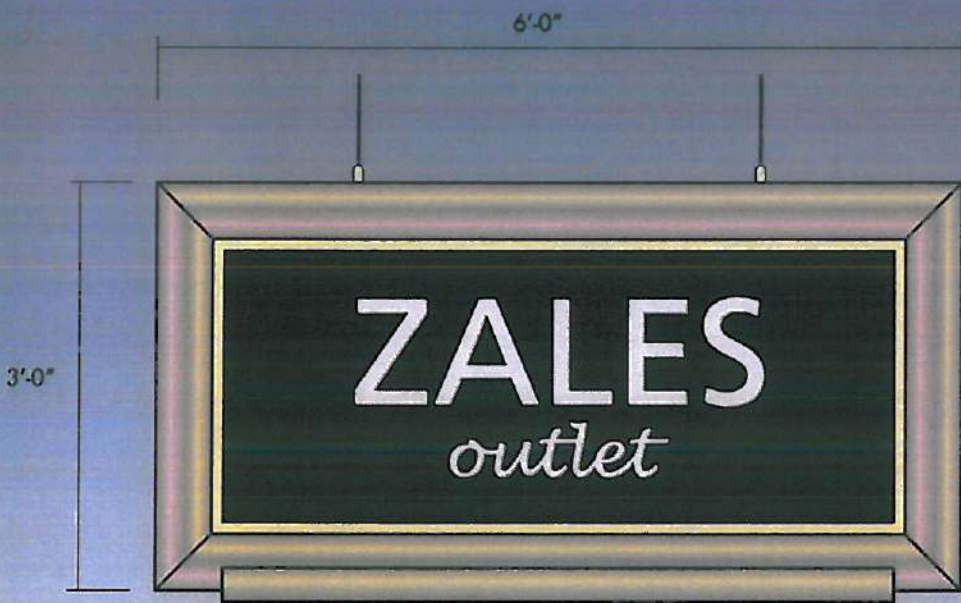
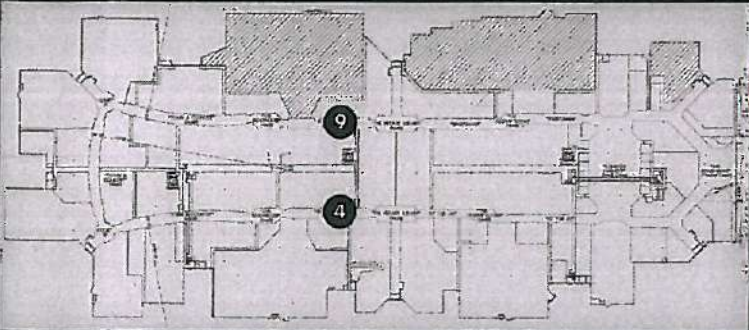
DISC OPTION
(HANGING)

4
8 March, 2010
REV 0:28

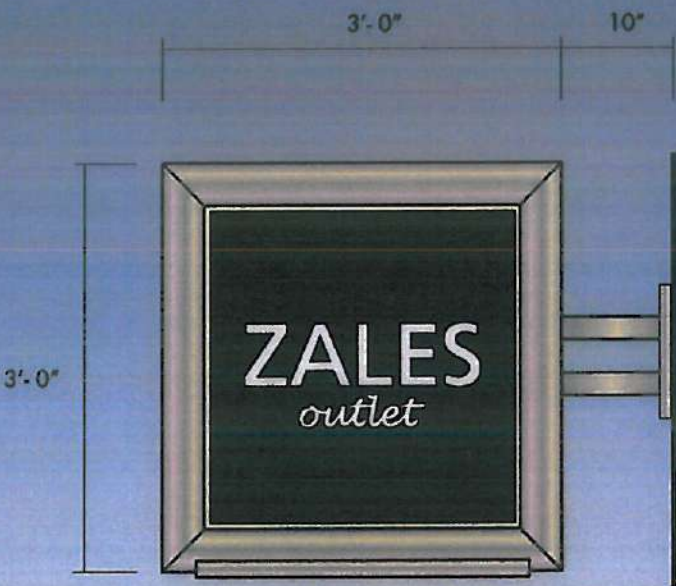
SELBERT
PERKINS
DESIGN

DISTRICTS 4 & 9

DISTRICTS 4 & 9 - Blade Sign Options



EXISTING OPTION

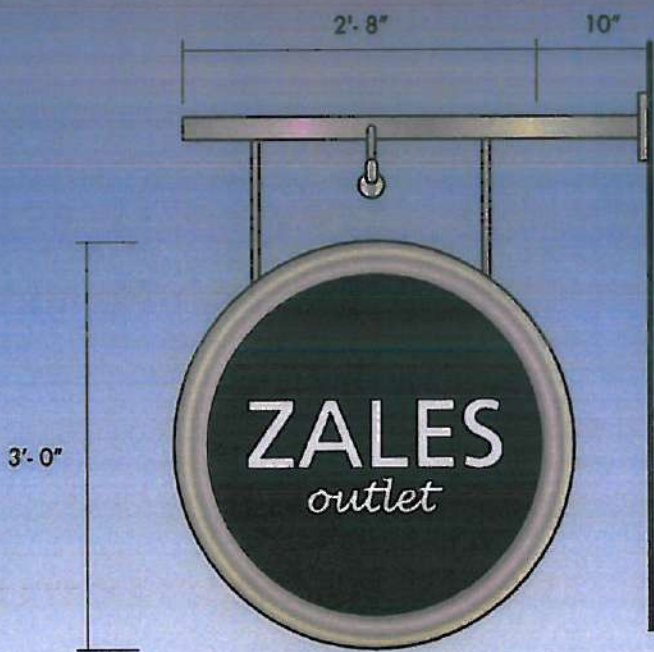


**SQAURE OPTION
(FLAG MOUNTED)**

FABRICATED ART FRAME W/ TENANT SIGN CABINET/PANEL
TEXT & GRAPHICS TO BE SURFACE APPLIED ACRYLIC LETTERS
EXTERNALLY ILLUMINATED W/ HORIZONTAL LIGHT FIXTURE



**DISC OPTION
(FLAG MOUNTED)**



**DISC OPTION
(HANGING)**

FABRICATED ART FRAME W/ TENANT SIGN CABINET/PANEL
TEXT & GRAPHICS TO BE SURFACE APPLIED ACRYLIC LETTERS
EXTERNALLY ILLUMINATED W/ MR16 LIGHT FIXTURE

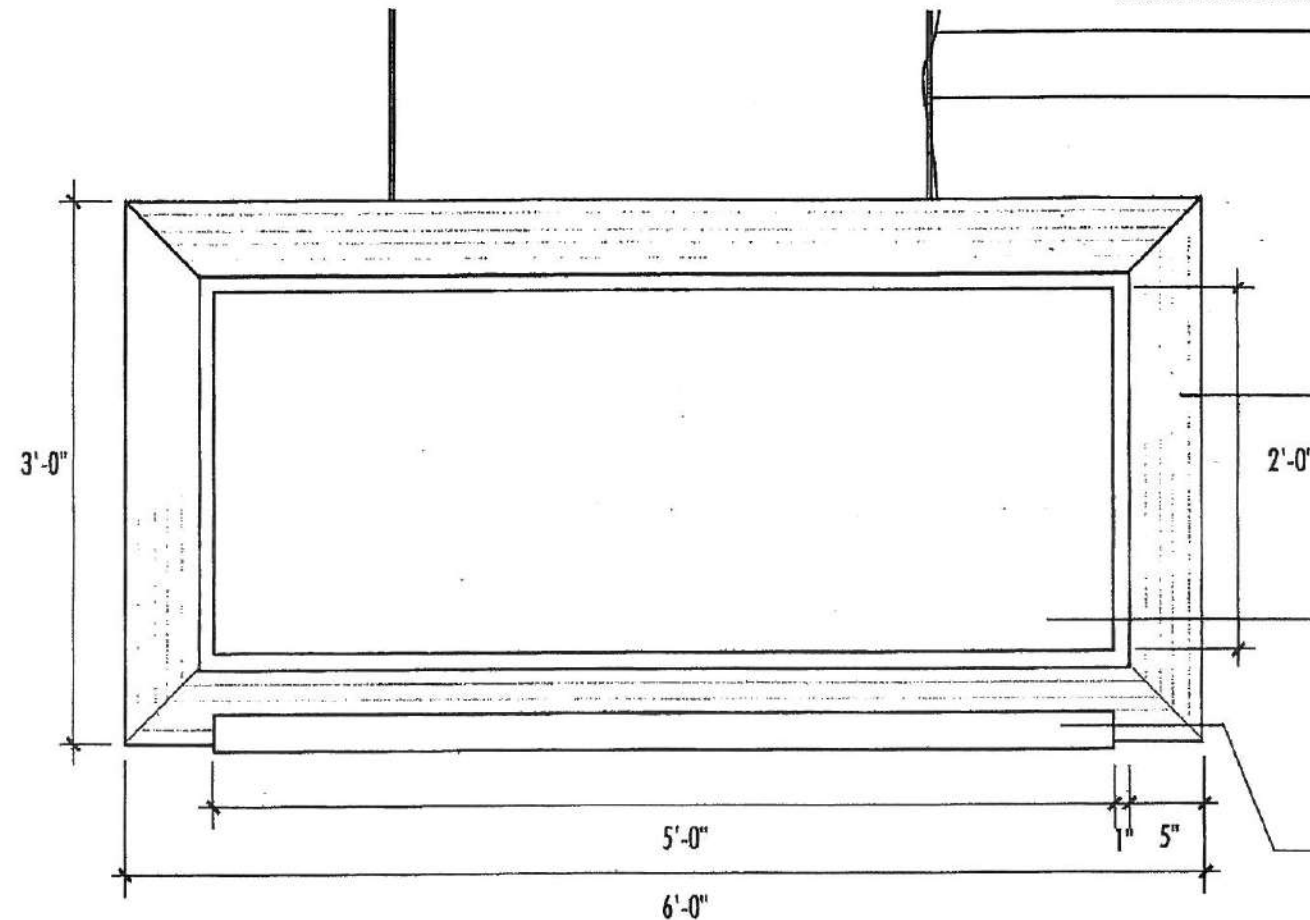
SCALE: 3/4"=1'-0"

SEE DETAILS FOR THIS SIGN
FOLLOWING SHEET

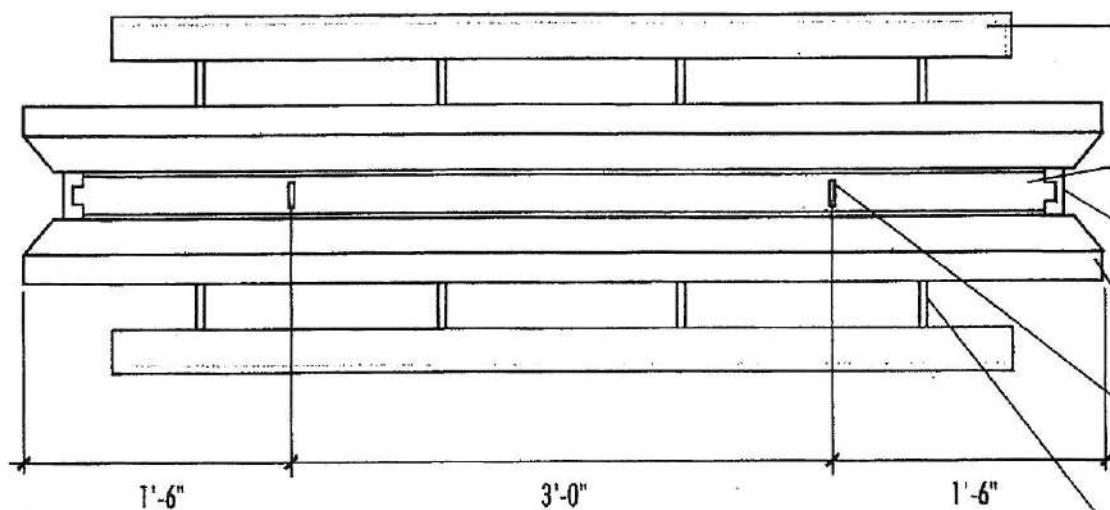
BLADE SIGNS PER LANDLORD DESIGN CRITERIA
SIGNS PROVIDED BY TENANT AT TENANTS COST

6
8 March, 2010
REV 0428





1 ELEVATION: SIGN TYPE R
SCALE 1"=1'-0"



3 PLAN VIEW: SIGN TYPE R
SCALE 1"=1'-0"

Black electrical cord to J-box at ceiling. Secure with Zip-ties.

1/8" stainless steel aircraft cable. Provide turnbuckles at ceiling connection. Verify ceiling connection with structural.

Metal ring hardware fastened to metal channel support for hanging hardware and cable.

Metal channel tenant blade sign support to allow for the periodic removal of sign.

Built-up stain grade hardwood "frame" attached to metal channel support structure.

5/8" thick primed and painted MDF inner frame.

3/4" thick primed and sealed MDF tenant sign panel.

Painted metal support arms for dedicated uplight fixture. 1/2" diam. Allow routing of electrical conduit.

Single fluorescent uplight fixture with painted metal shade element.

3-sided painted metal access cover to conceal associated electrical equipment.

Single fluorescent uplight fixture with painted metal shade element.

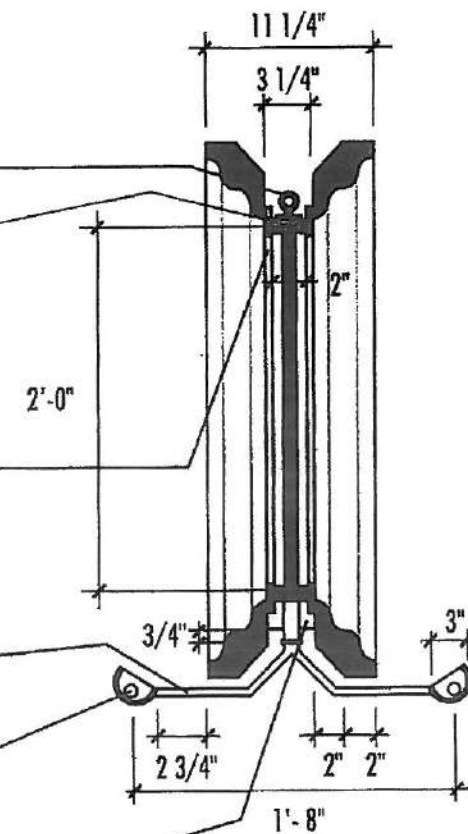
Metal support/bracing channel.

3-sided painted metal access cover to conceal associated electrical equipment.

Built-up stain grade hardwood "frame" attached to metal channel support structure.

Metal ring hardware fastened to metal channel support for hanging hardware and cable.

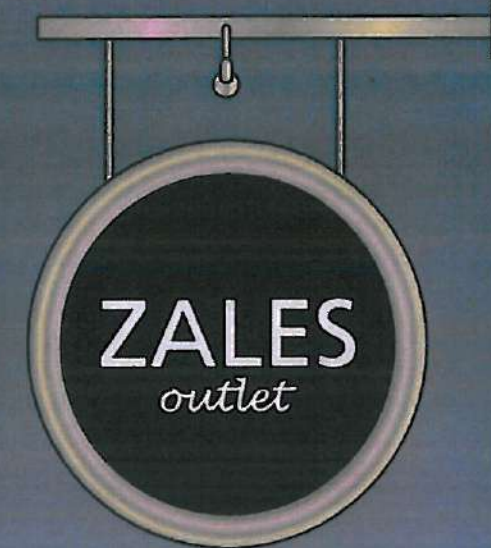
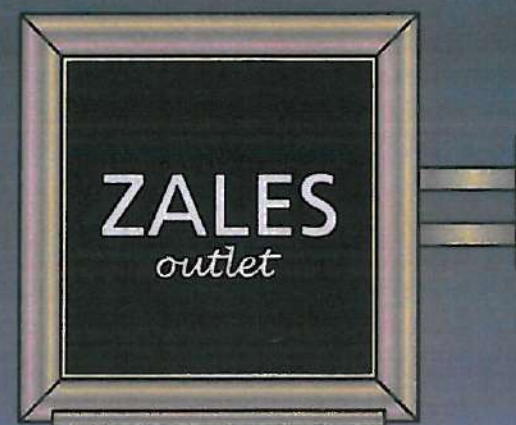
Painted metal support arms for dedicated uplight fixture. 1/2" diam. Allow routing of electrical conduit.



2 SECTION: SIGN TYPE R
SCALE 1"=1'-0"



4 PERSPECTIVE: SIGN TYPE R
NOT TO SCALE



9'-2" AFF



SCALE: 3/4"=1'-0"

EXISTING OPTION

SQUARE OPTION
(FLAG MOUNTED)

DISC OPTION
(HANGING)

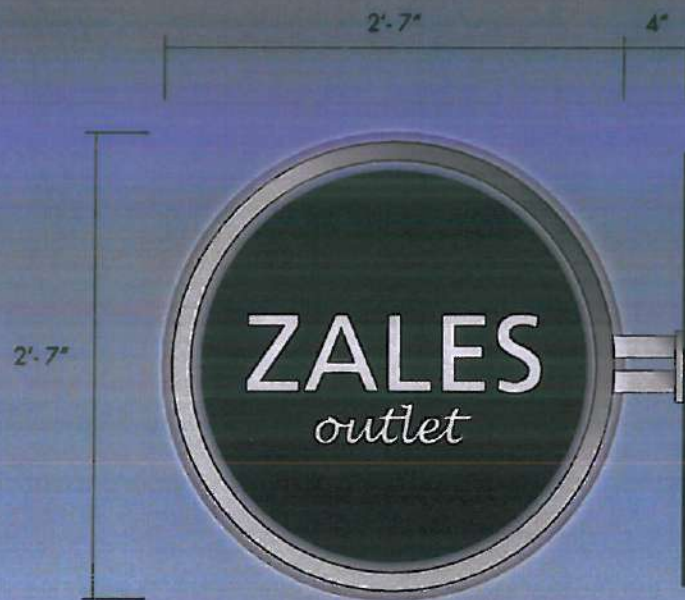
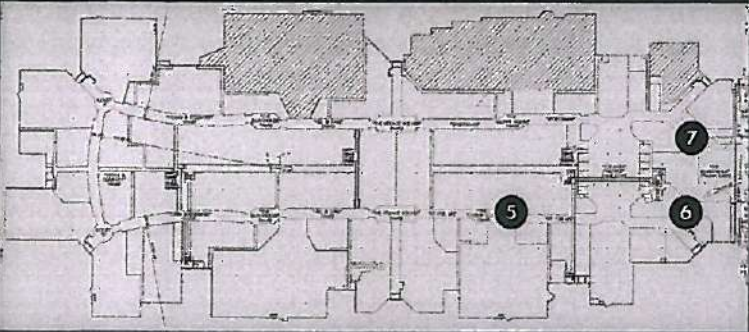
8 March, 2010
REV 0428

7

SELBERT
PERKINS
DESIGN

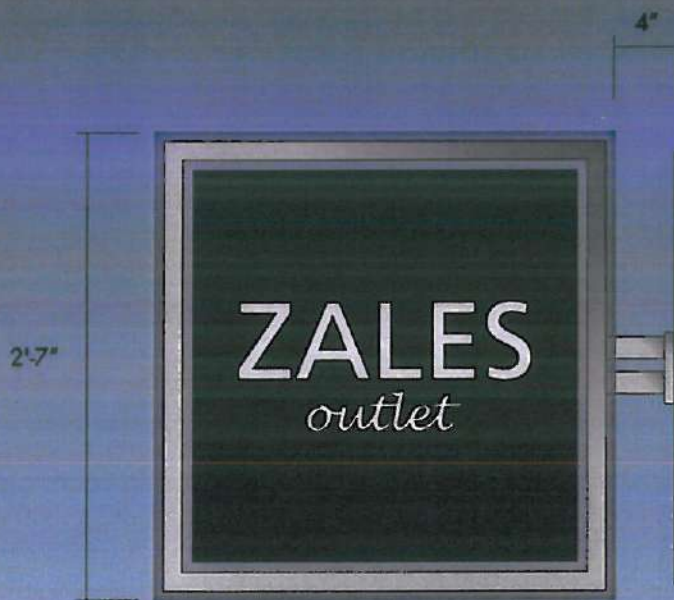
DISTRICT 5, 6 & 7

DISTRICTS 5, 6 & 7 - Blade Sign Option 1



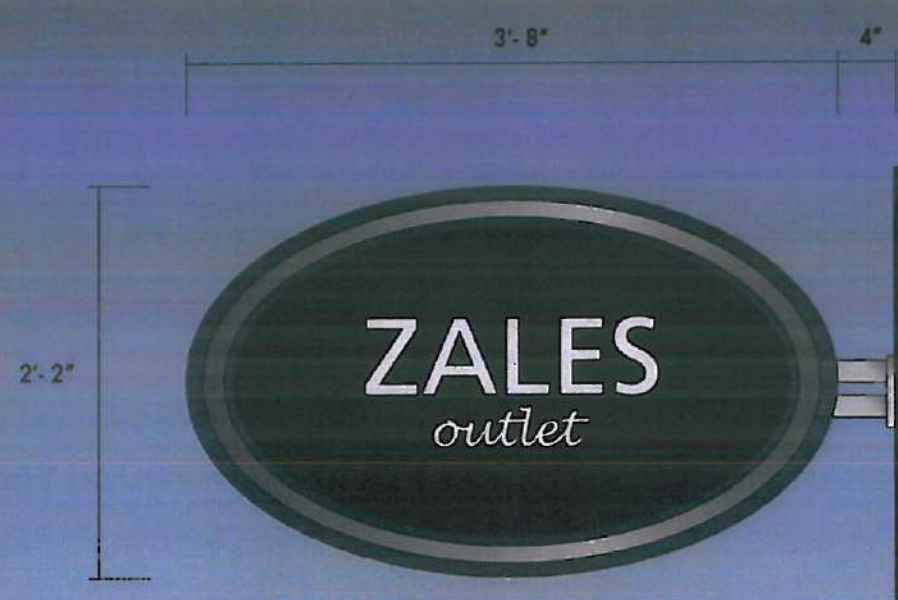
DISC OPTION
(FLAG MOUNTED)

FABRICATED METAL TENANT SIGN CABINET W/
CUT-OUT, PUSHED-THRU ACRYLIC TEXT
INTERNALLY ILLUMINATED PUSH-THROUGH LETTERS
REAR SIGN PANEL TO MATCH MALL OR TENANT COLORS
SATIN BRUSHED, CUSTOM FLAG MOUNTED FRAME



SQUARE OPTION
(FLAG MOUNTED)

FABRICATED METAL TENANT SIGN CABINET W/
CUT-OUT, PUSHED-THRU ACRYLIC TEXT
INTERNALLY ILLUMINATED PUSH-THROUGH LETTERS
REAR SIGN PANEL TO MATCH MALL OR TENANT COLORS
SATIN BRUSHED, CUSTOM FLAG MOUNTED FRAME



ELLIPSE OPTION
(FLAG MOUNTED)

FABRICATED METAL TENANT SIGN CABINET W/
CUT-OUT, PUSHED-THRU ACRYLIC TEXT
INTERNALLY ILLUMINATED PUSH-THROUGH LETTERS
REAR SIGN PANEL TO MATCH MALL OR TENANT COLORS
SATIN BRUSHED, CUSTOM FLAG MOUNTED FRAME

SCALE: 1"=1'-0"

BLADE SIGNS PER LANDLORD DESIGN CRITERIA
SIGNS PROVIDED BY TENANT AT TENANTS COST

9
8 March, 2010
REV 0428





9'-2" AFF



SCALE: 3/4"=1'-0"

DISC OPTION
(FLAG MOUNTED)

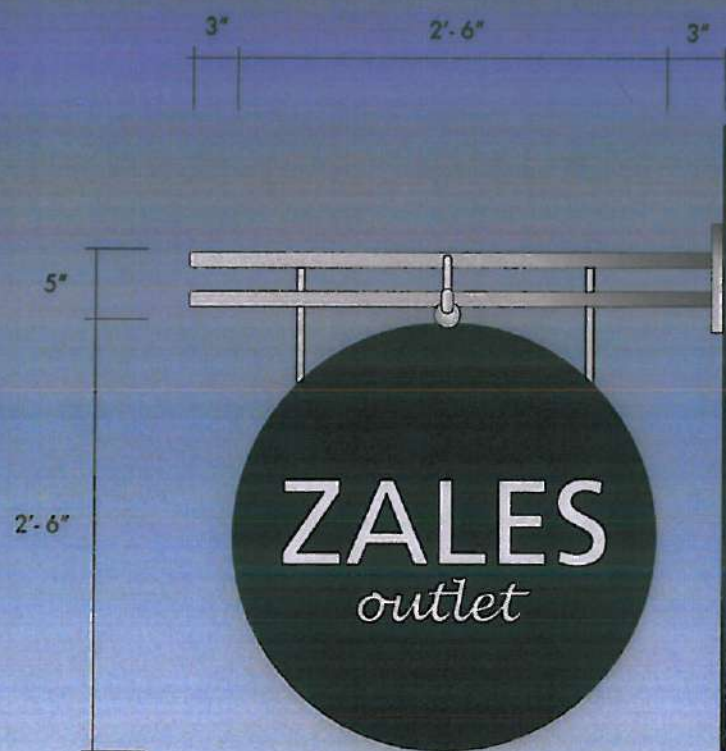
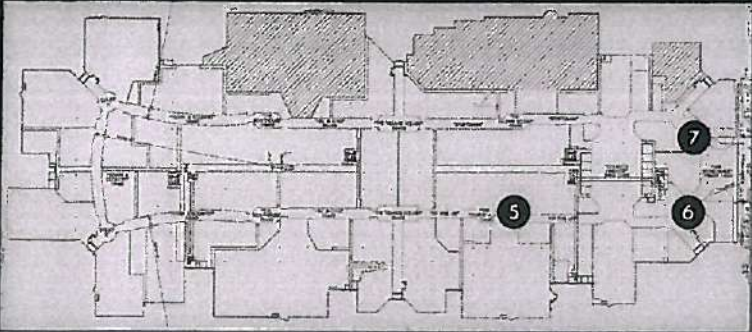
SQUARE OPTION
(FLAG MOUNTED)

ELLIPSE OPTION
(FLAG MOUNTED)

10
8 March 2010
REV 0428

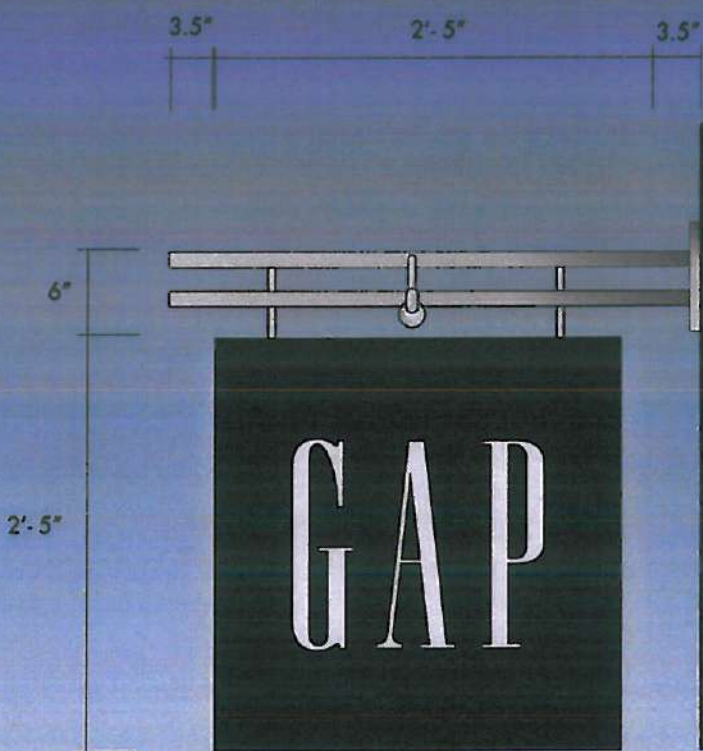
SELBERT
PERKINS
DESIGN

DISTRICTS 5, 6 & 7 - Blade Sign Option 2



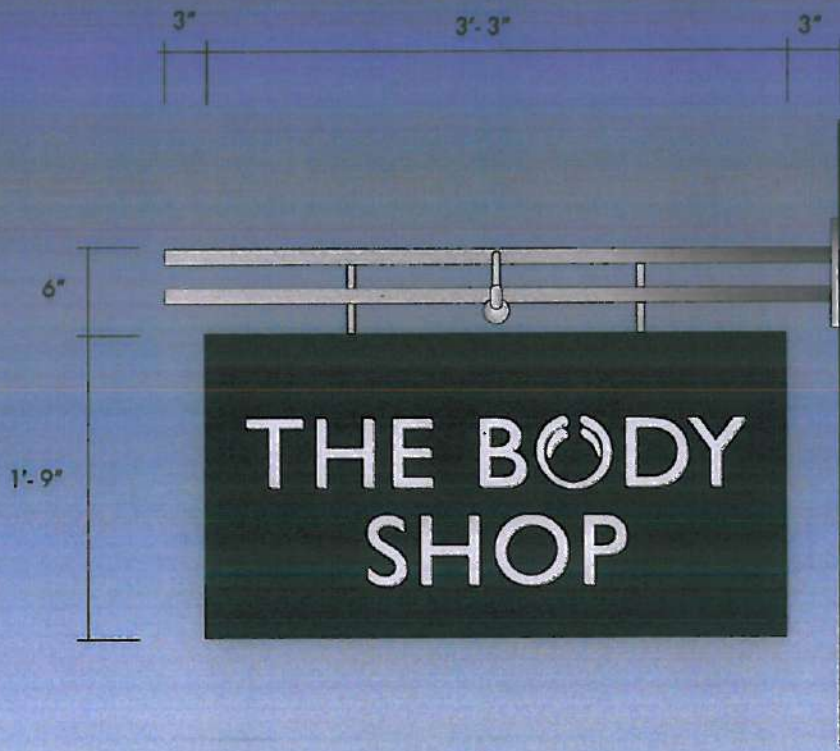
DISC OPTION
(FLAG MOUNTED)

FABRICATED METAL TENANT SIGN CABINET W/
SURFACE APPLIED ACRYLIC TEXT
EXTERNALLY ILLUMINATED W/ MR16 LIGHT FIXTURE
SATIN BRUSHED, CUSTOM FLAG MOUNT FRAME



SQUARE OPTION
(FLAG MOUNTED)

FABRICATED METAL TENANT SIGN CABINET W/
SURFACE APPLIED ACRYLIC TEXT
EXTERNALLY ILLUMINATED W/ MR16 LIGHT FIXTURE
SATIN BRUSHED, CUSTOM FLAG MOUNT FRAME

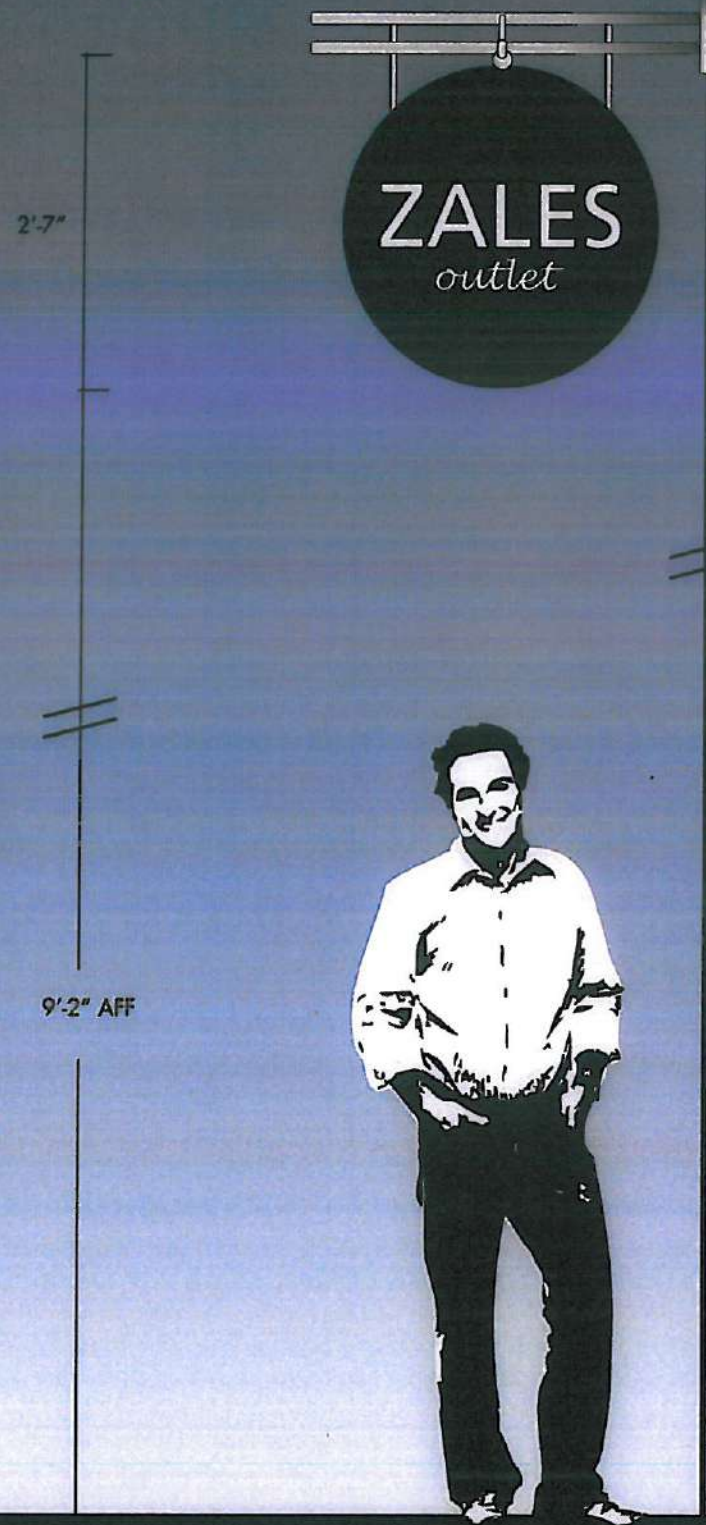


RECTANGLE OPTION
(FLAG MOUNTED)

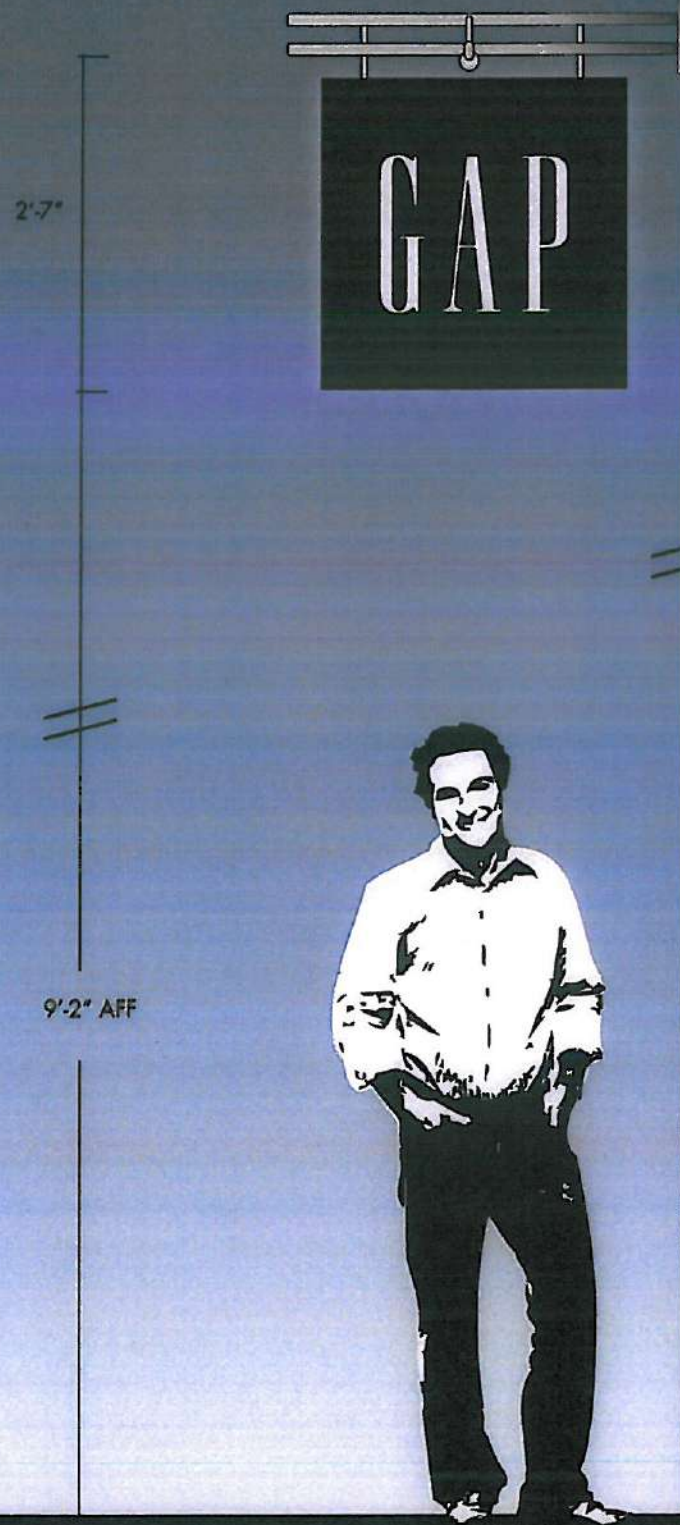
FABRICATED METAL TENANT SIGN CABINET W/
SURFACE APPLIED ACRYLIC TEXT
EXTERNALLY ILLUMINATED W/ MR16 LIGHT FIXTURE
SATIN BRUSHED, CUSTOM FLAG MOUNT FRAME

SCALE: 1"=1'-0"

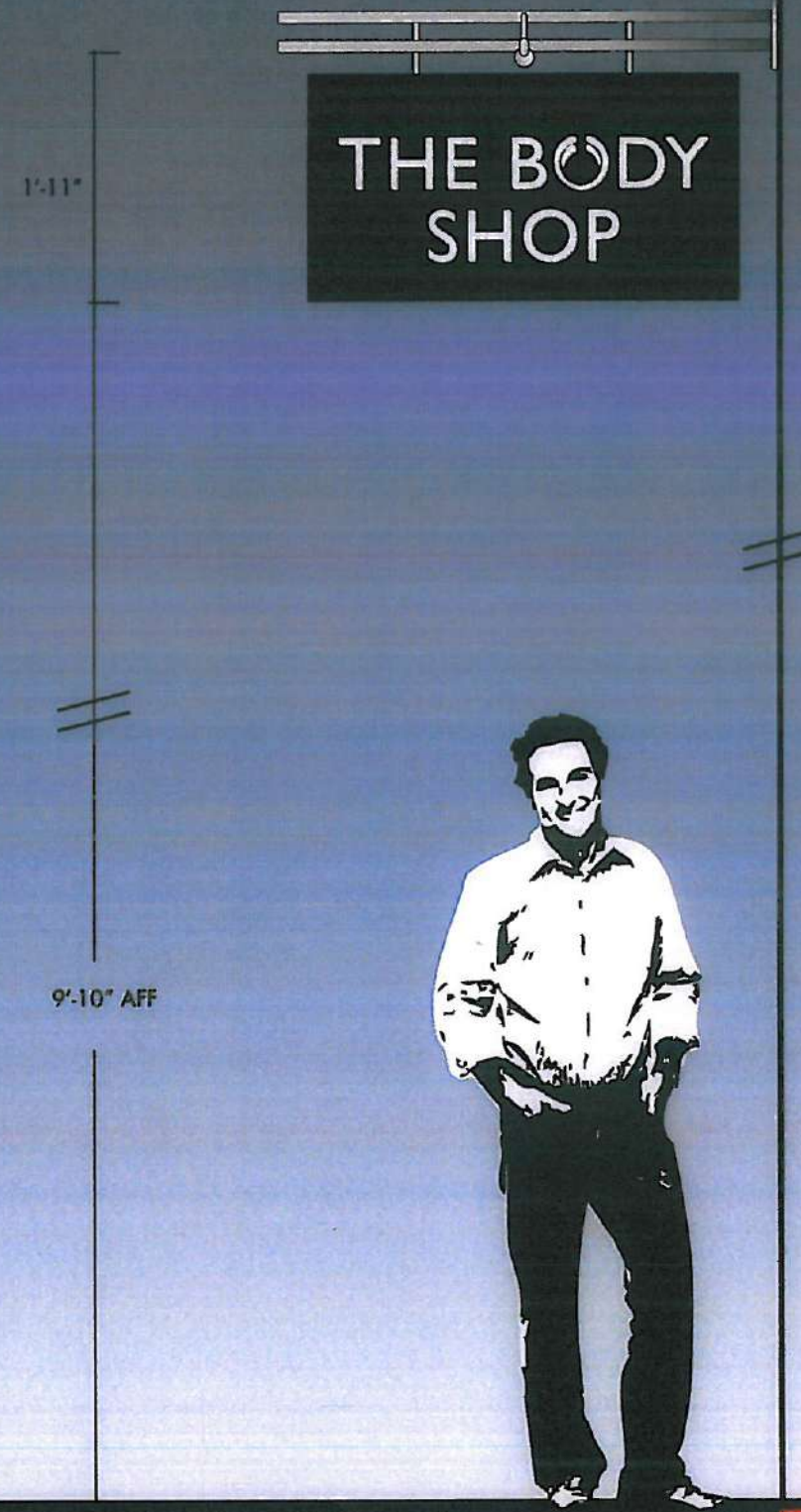
BLADE SIGNS PER LANDLORD DESIGN CRITERIA
SIGNS PROVIDED BY TENANT AT TENANTS COST



DISC OPTION
(FLAG MOUNTED)



SQUARE OPTION
(FLAG MOUNTED)



RECTANGLE OPTION
(FLAG MOUNTED)

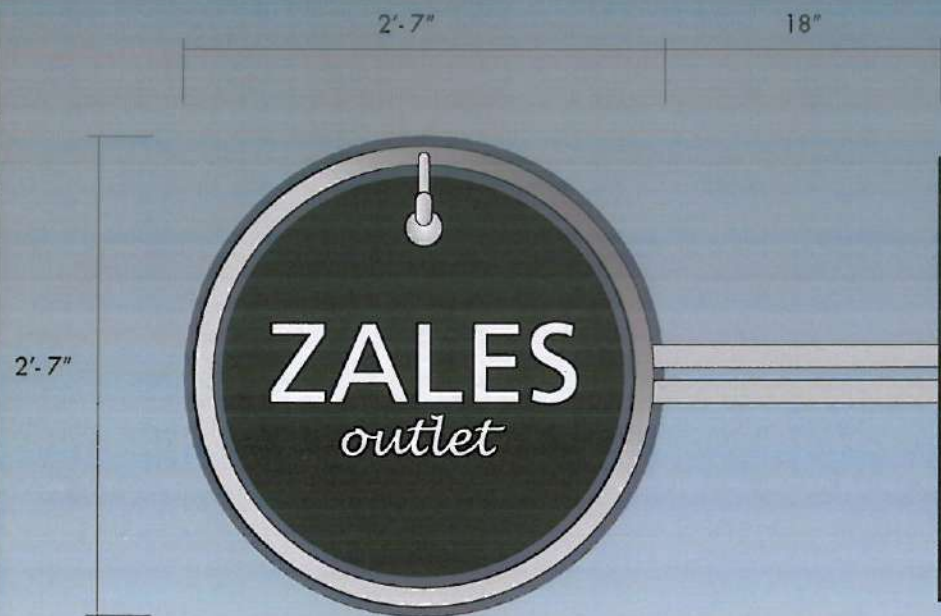
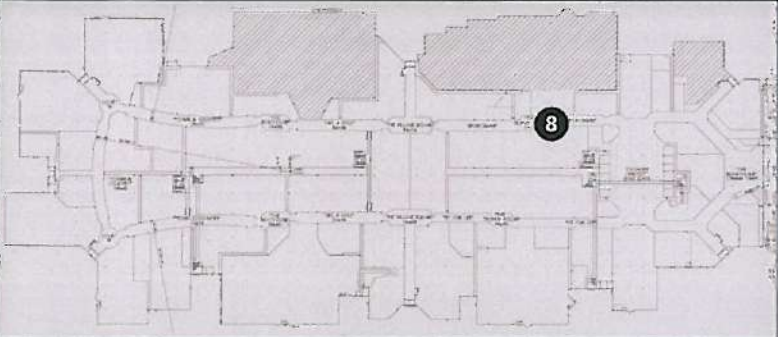
SCALE: 3/4"=1'-0"

12
8 March, 2010
REV 0428

SELBERT
PERKINS
DESIGN

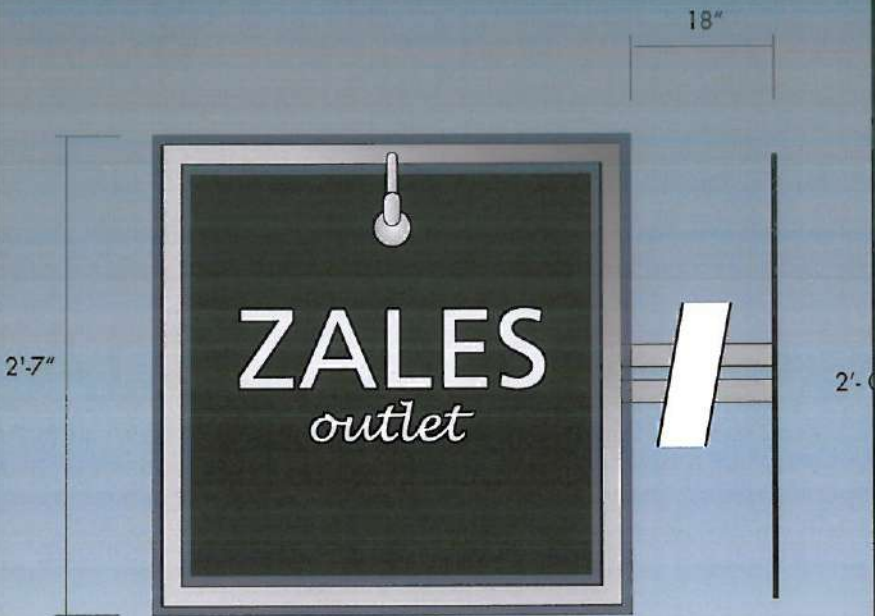
DISTRICT 8

DISTRICTS 8 - Blade Sign Option 1



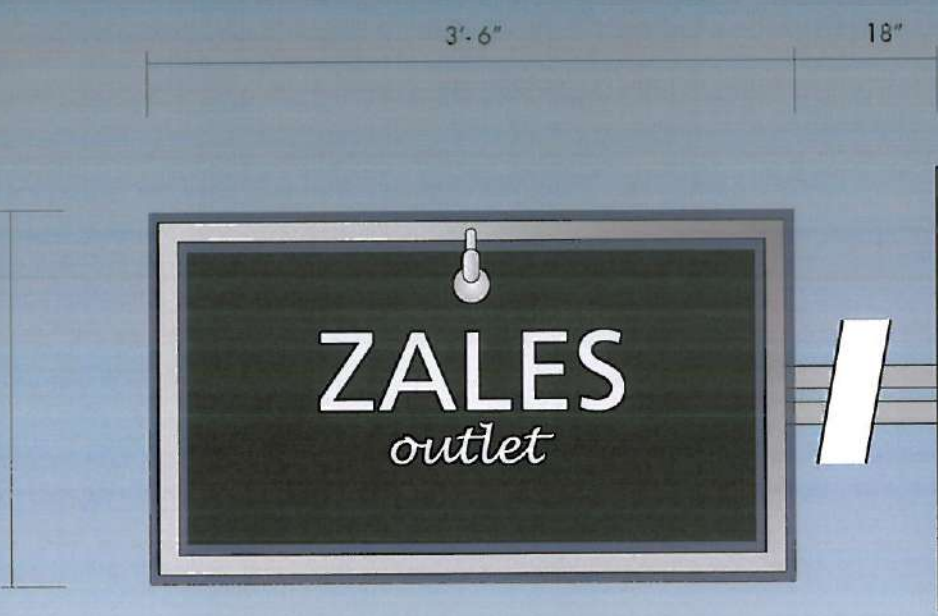
DISC OPTION
(FLAG MOUNTED)

FABRICATED METAL TENANT SIGN CABINET W/
SURFACE APPLIED DIMENSIONAL ACRYLIC TEXT
EXTERNALLY ILLUMINATED W/ MR16 LIGHT FIXTURE
REAR SIGN PANEL TO MATCH MALL OR TENANT COLORS
SATIN BRUSHED, CUSTOM FLAG MOUNTED FRAME



SQUARE OPTION
(FLAG MOUNTED)

FABRICATED METAL TENANT SIGN CABINET W/
SURFACE APPLIED DIMENSIONAL ACRYLIC TEXT
EXTERNALLY ILLUMINATED W/ MR16 LIGHT FIXTURE
REAR SIGN PANEL TO MATCH MALL OR TENANT COLORS
SATIN BRUSHED, CUSTOM FLAG MOUNTED FRAME



RECTANGLE OPTION
(FLAG MOUNTED)

FABRICATED METAL TENANT SIGN CABINET W/
SURFACE APPLIED DIMENSIONAL ACRYLIC TEXT
EXTERNALLY ILLUMINATED W/ MR16 LIGHT FIXTURE
REAR SIGN PANEL TO MATCH MALL OR TENANT COLORS
SATIN BRUSHED, CUSTOM FLAG MOUNTED FRAME

SCALE: 1"=1'-0"

CENTER ARMATURE VERTICALLY
WITHIN DOWELS (TYPICAL); VERIFY &
COORD. CONDITIONS IN FIELD



APPROX. 9'-8" AFF
VIF



SCALE: 3/4"=1'-0"

DISC OPTION
(FLAG MOUNTED)



SQUARE OPTION
(FLAG MOUNTED)



APPROX. 10'-0" AFF
VIF



RECTANGLE OPTION
(FLAG MOUNTED)

15
8 March, 2010
REV 1210

SELBERT
PERKINS
DESIGN



Great Lakes Crossing 2010 Blade Sign Criteria		
District #	Installation Height	Color Clarification
1	On the elevation side with lower storefronts, 11'-0" Top of Sign (TOS) On the elevation side with Higher storefronts, 14'-2" TOS*	Match the existing Sign Bracket Color
2	On the elevation side with lower storefronts, 11'-0" Top of Sign (TOS) On the elevation side with Higher storefronts, 13'-0" TOS	Match the existing Sign Bracket Color
3	On the elevation side with lower storefronts, 11'-0" Top of Sign (TOS) On the elevation side with Higher storefronts, 13'-0" TOS	Match the existing Sign Bracket Color
4	12'-7" TOS both sides of concourse	Match the existing Sign Bracket Color
5	10'-8" TOS both sides of concourse	Silver to match: PMS 877C, Blue Metallic to match: PMS 8201C
6	11'-0" TOS both sides of concourse	Silver to match: PMS 877C, Blue Metallic to match: PMS 8201C
7	13'-0" TOS both sides of concourse. BI sign to install in gap above neutral pier.**	Silver to match: PMS 877C, Blue Metallic to match: PMS 8201C
8	See attachment, these have to be mounted between the existing horizontal bars of the vertical elements (dowels)	Silver to match: PMS 877C, Accent color to match Architectural Color at column base of sign location (see page 16)
9	12'-5" TOS	Match the existing Sign Bracket Color

* Revised 9-13-10, (was 13'-0", which is too low, interfered with existing wood slats).

* Revised 9-22-10.

* Revised 12-17-10. (District 8 only, for sconce relamp clearances).