

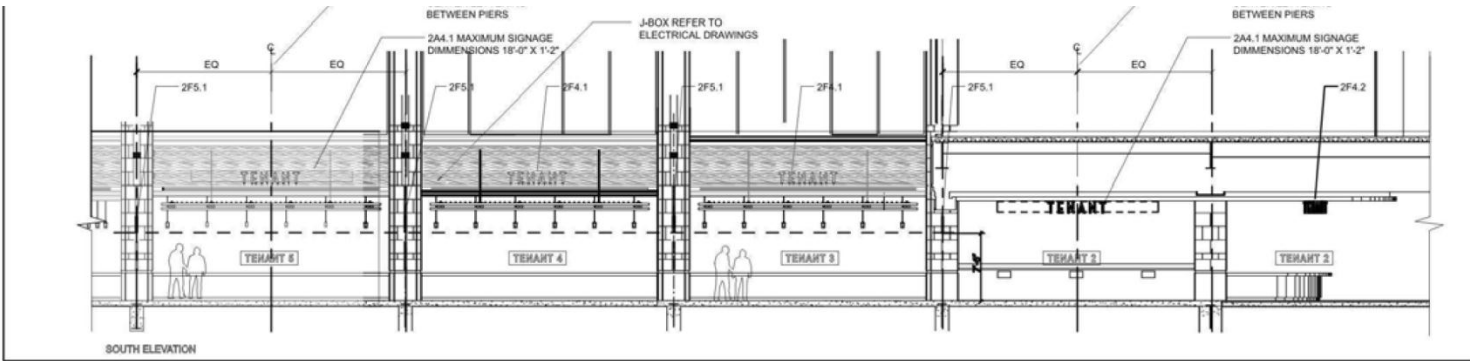


CITY CREEK
CENTER



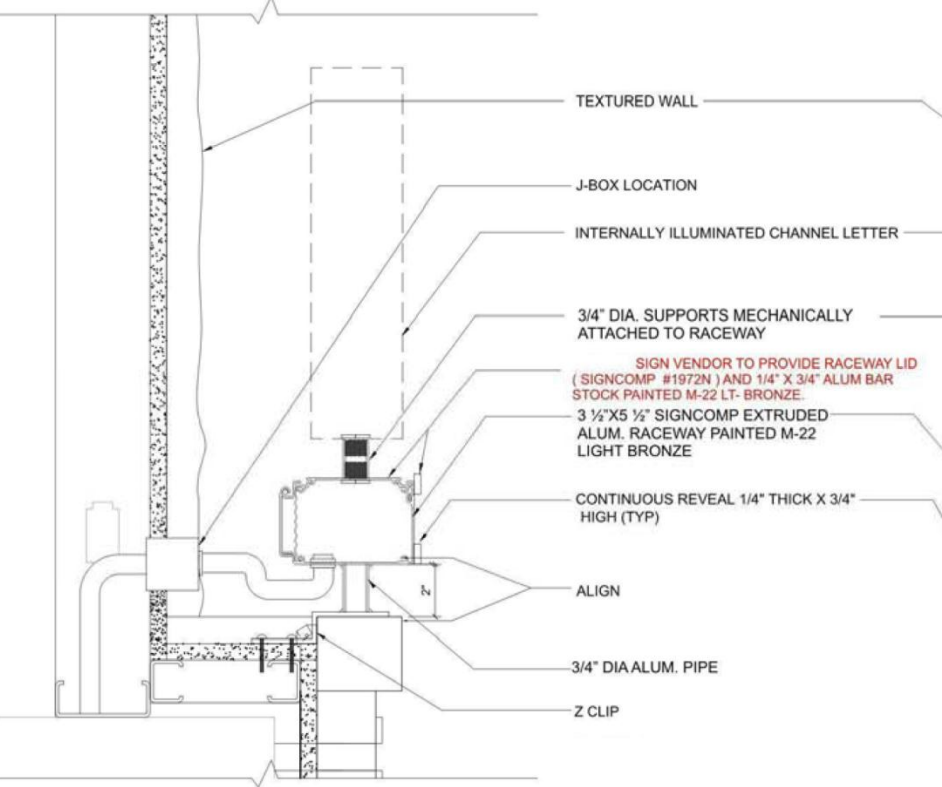
Taubman

FOOD COURT DESIGN CRITERIA
APRIL 2010

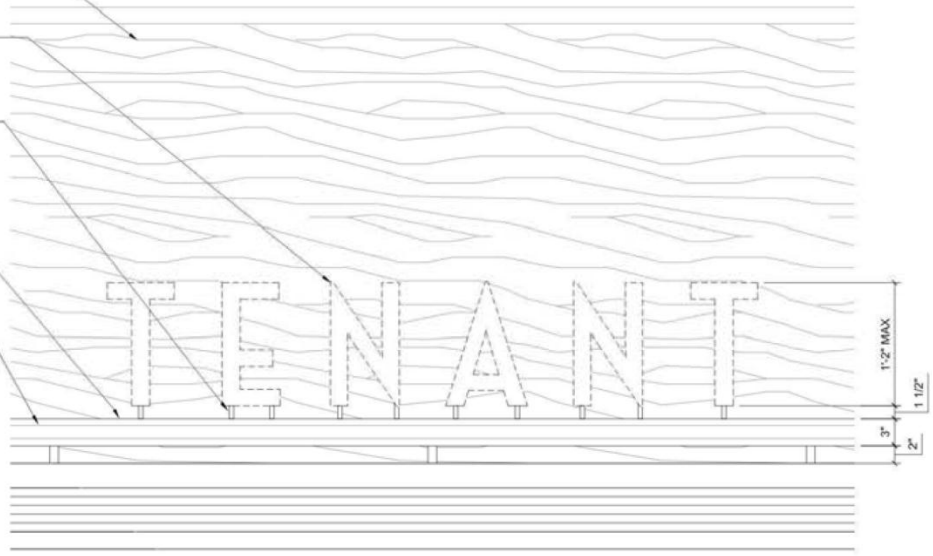


CONTEXT ELEVATION

NOTE
 LED FIXTURE TO BE 120V. LIGHT FIXTURE DRIVER NOT TO EXCEED 500W AND TO BE REMOTELY LOCATED IN TENANT SUITE WITH ON/OFF SWITCH OR TIMER DEVICE. CIRCUIT TO BE TENANT CIRCUIT.



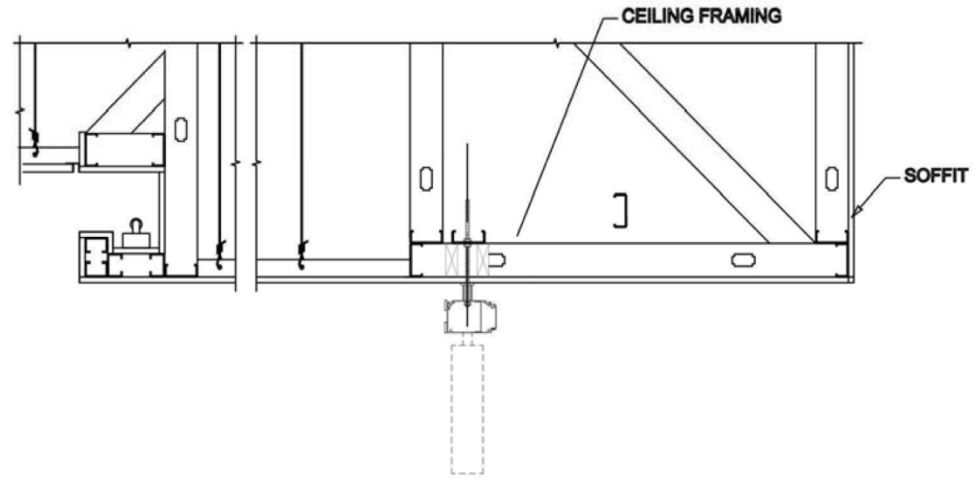
SECTION DETAIL



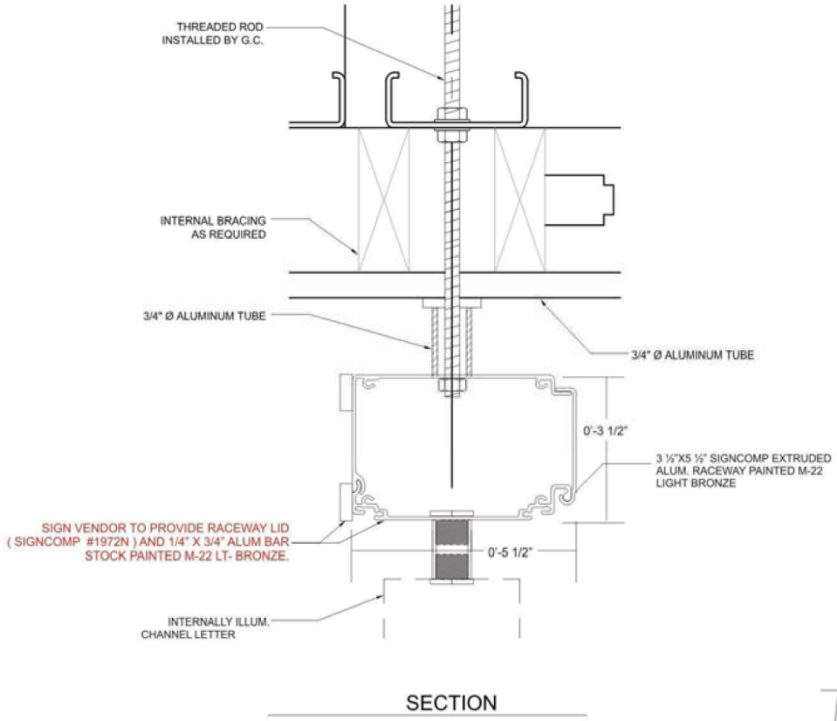
TENANT PROVIDED SIGN
 TENANT TO SUBMIT IDENTITY LOGO TO OWNER FOR APPROVAL

FRONT ELEVATION

2F4.1 TENANT IDENTITY - POST MOUNTED *LANDLORD TO SUPPLY AND INSTALL RACEWAYS AND Z-CLIPS.*

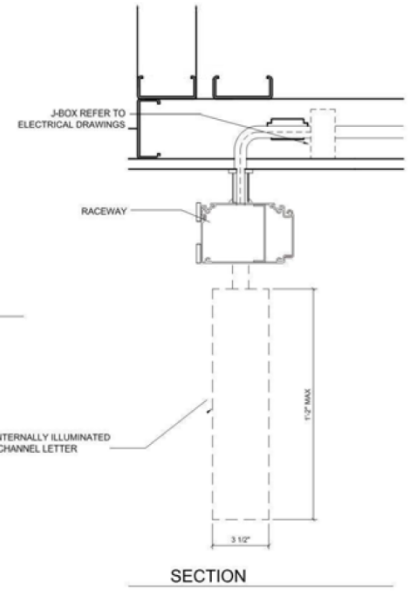


SECTION - CEILING

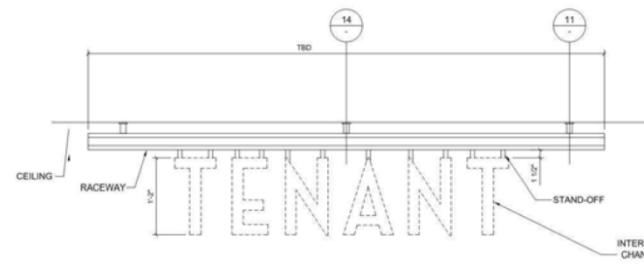


SECTION

NOTE
LED FIXTURE TO BE 120V. LIGHT FIXTURE DRIVER NOT TO EXCEED 500W AND TO BE REMOTELY LOCATED IN TENANT SUITE WITH ON/OFF SWITCH OR TIMER DEVICE. CIRCUIT FOR THE FIXTURE TO BE A TENANT CIRCUIT.

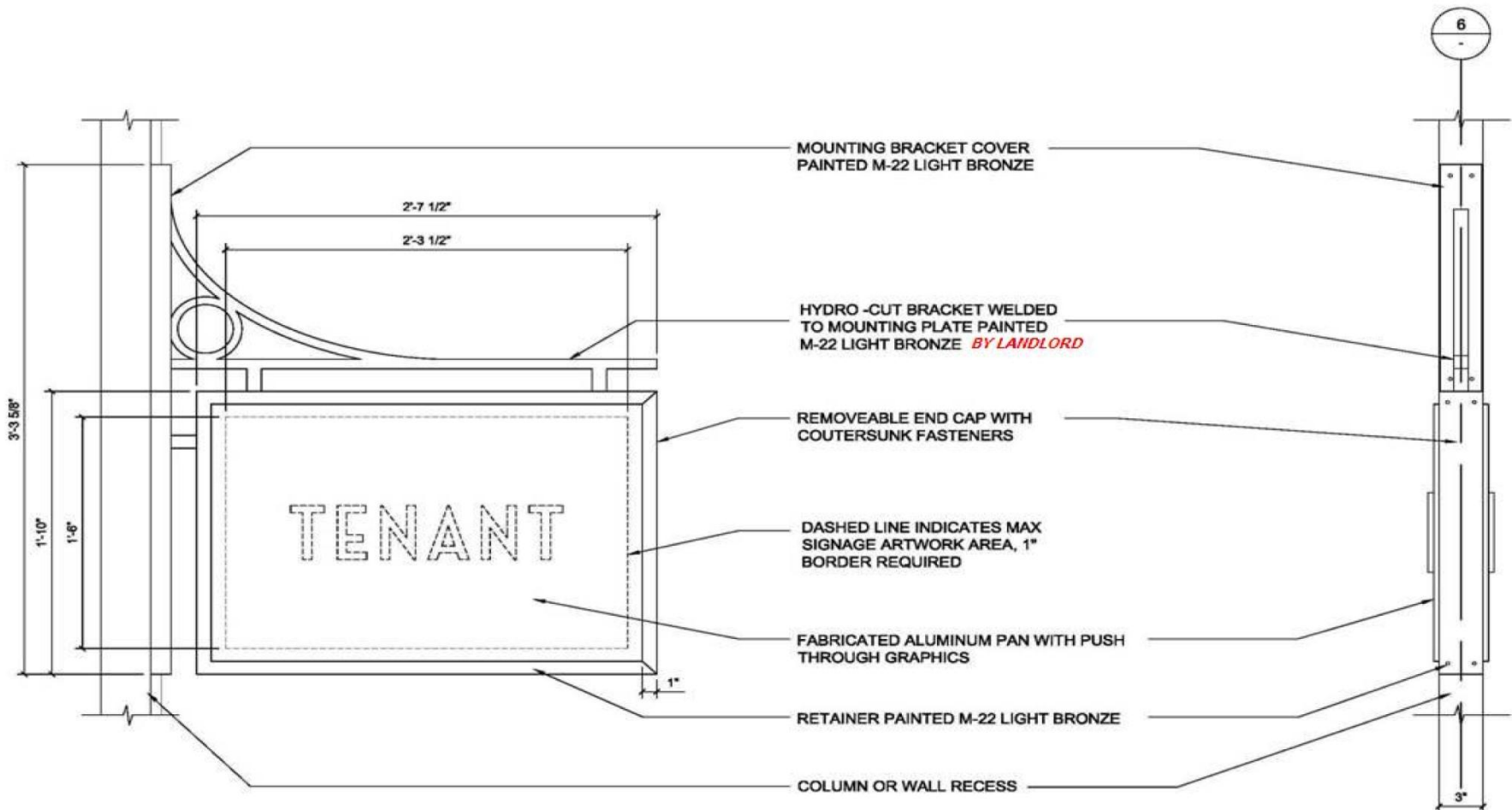


SECTION



FRONT ELEVATION
SCALE 1/2"=1'-0"

LANDLORD TO SUPPLY AND INSTALL HANGING RACEWAYS 2F4.2 TENANT IDENTITY - SUSPENDED



MOUNTING BRACKET COVER
PAINTED M-22 LIGHT BRONZE

HYDRO -CUT BRACKET WELDED
TO MOUNTING PLATE PAINTED
M-22 LIGHT BRONZE *BY LANDLORD*

REMOVEABLE END CAP WITH
COUNTERSUNK FASTENERS

DASHED LINE INDICATES MAX
SIGNAGE ARTWORK AREA, 1"
BORDER REQUIRED

FABRICATED ALUMINUM PAN WITH PUSH
THROUGH GRAPHICS

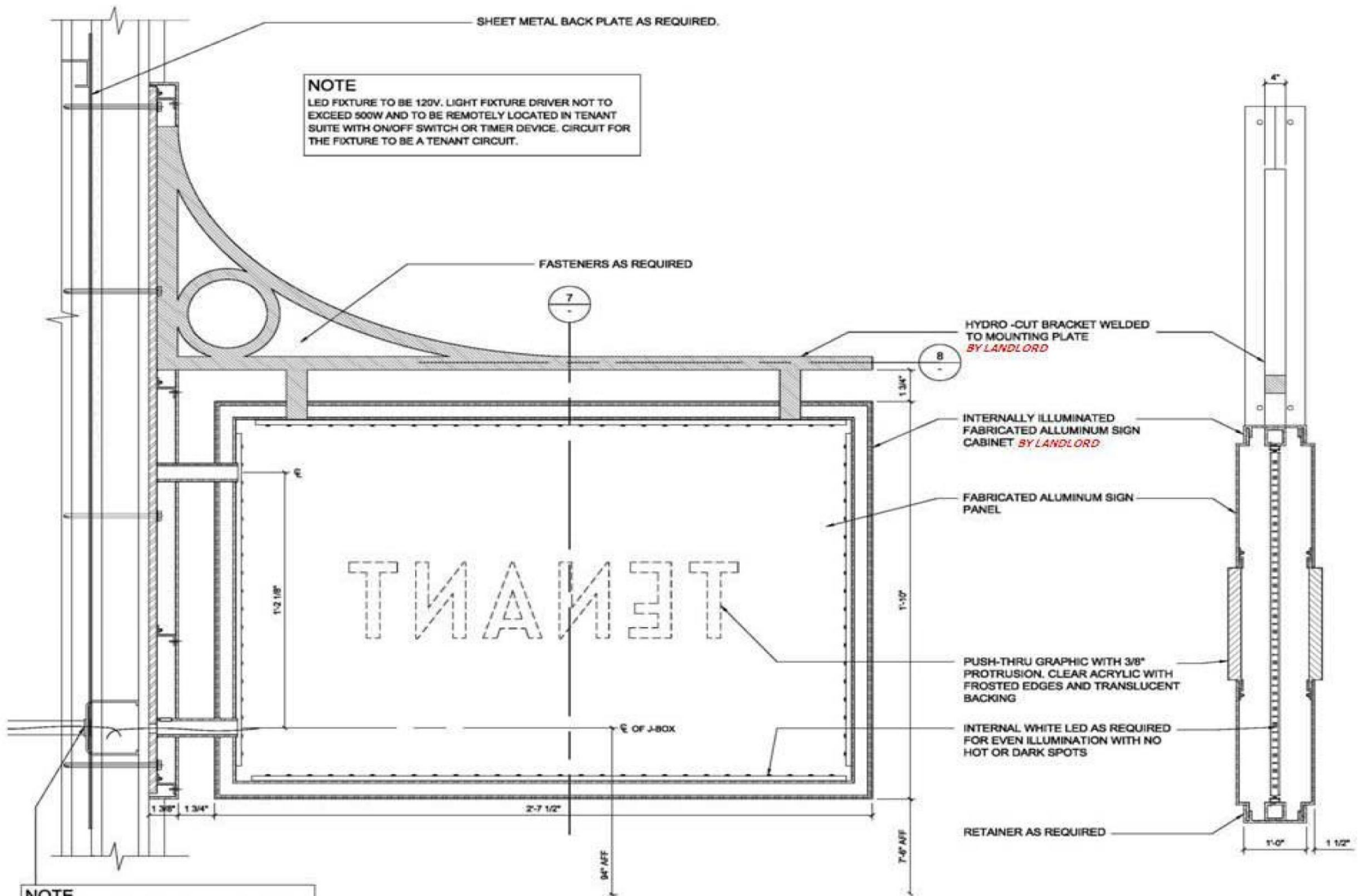
RETAINER PAINTED M-22 LIGHT BRONZE

COLUMN OR WALL RECESS

DOUBLE-FACED INTERNALLY ILLUMINATED
ARTWORK FOR SIGN CABINET *BY LANDLORD CONTRACTOR AT TENANT EXPENSE*

4 FRONT ELEVATION
DTL-07 1-1/2" = 1'-0"

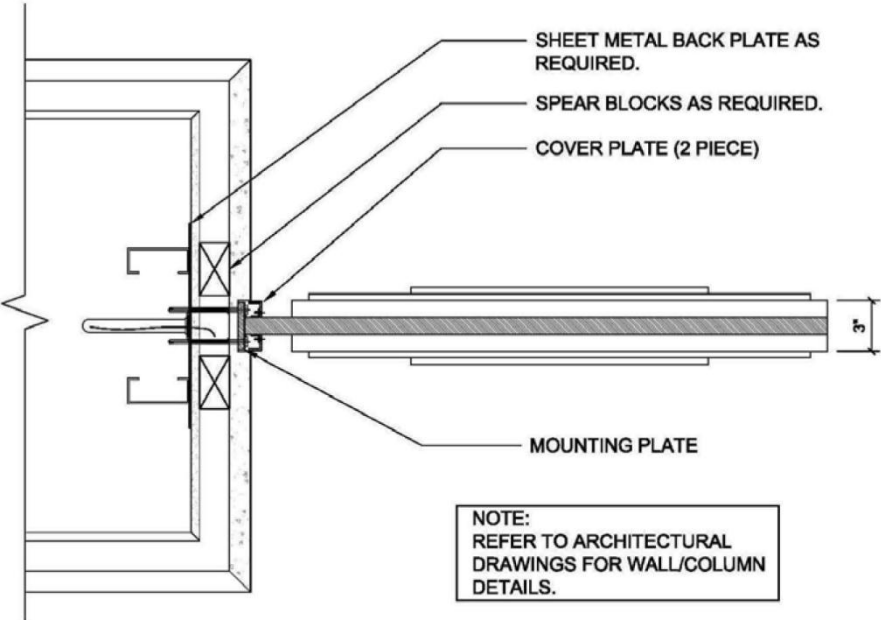
5 FRONT ELEVATION
DTL-07 1-1/2" = 1'-0"



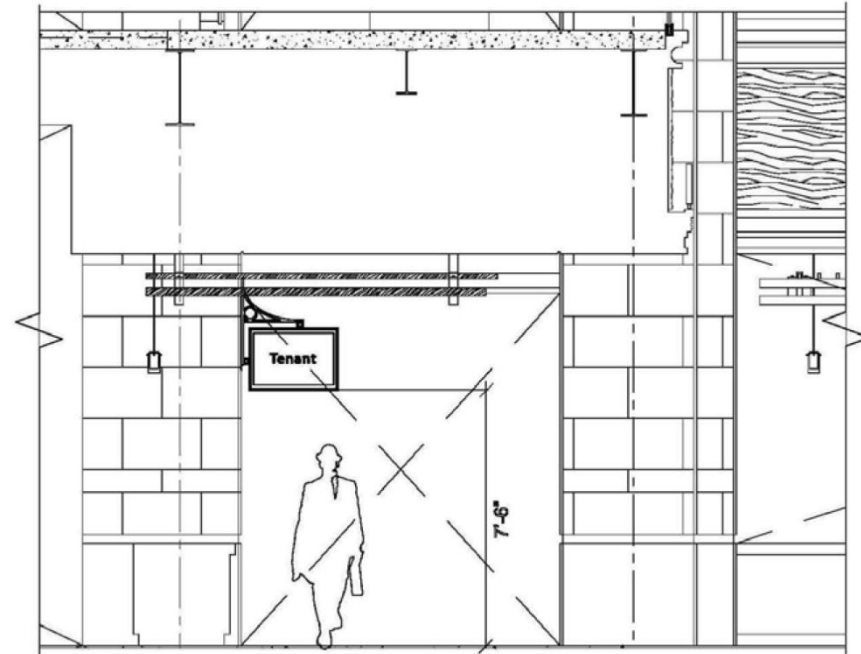
6 SECTION DETAIL
 DTL-07 3" = 1'-0"

7 SECTION DETAIL
 DTL-07 3" = 1'-0"

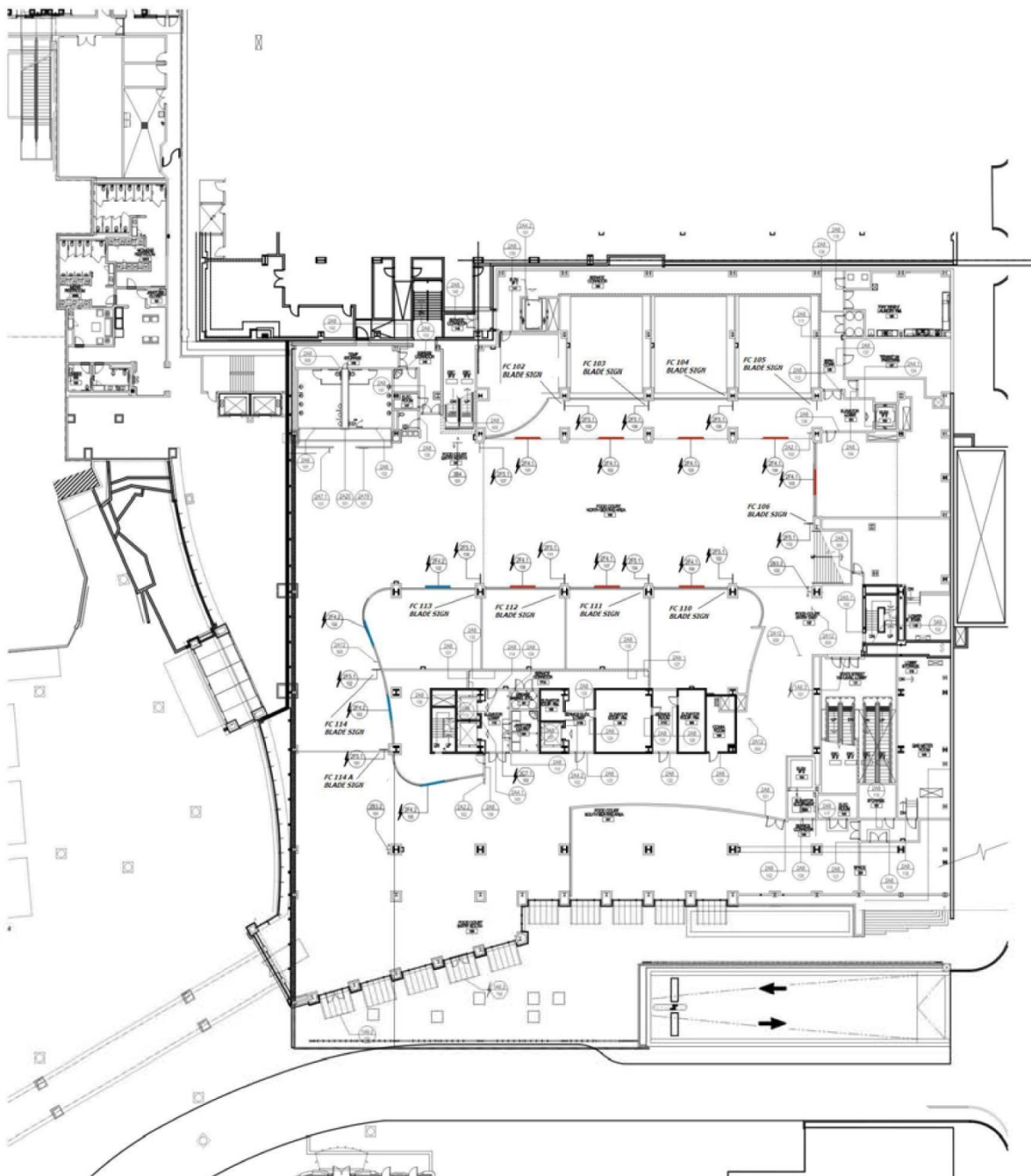
2F5.1 TENANT BLADE - RECTANGLE



SECTION DETAIL



CONTEXT ELEVATION

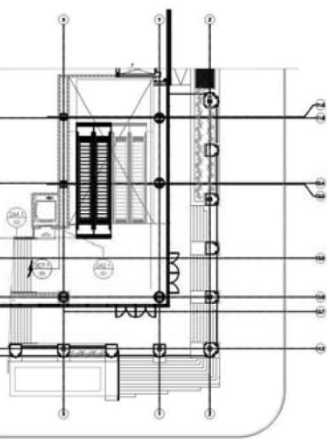


SIGN LEGEND	
IDENTIFICATION	
(SML1)	SITE ID - CRIMP MOUNT
(SML2)	BUILDING ID-FLAQUE
(SML3)	FOOD COURT G - SECONDARY
(SML4)	FOOD COURT G - WALL MOUNT
(SML5)	FOOD COURT G - PRIMARY
(S17)	SITE ID - LOGO BLADE
(S21)	ELEVATOR/ESCALATOR G - BLADE
(S22)	ELEVATOR/ESCALATOR G - BLADE LARGE
(S23)	ELEVATOR LEVEL ID
(S24)	ELEVATOR LEVEL ID - BOX
(S25)	STAIR ID
(S26)	STAIR ID - EXIT
(S27)	RESTROOM G - WALL MOUNT
(S28)	RESTROOM G - BLADE
(S29)	ROOM ID
(S30)	ROOM ID - REGULATION
(S31)	RESTROOM G - CUTOUT LETTERS
(S32)	RESTROOM G - CUT OUT SYMBOL
(S33)	STAIR LEVEL ID
DIRECTION	
(S34)	PEDESTRIAN DIRECTION - SMALL BLADE
(S35)	PEDESTRIAN DIRECTION - WALL MOUNTED MEDIUM
(S36)	PEDESTRIAN DIRECTION - CUT LETTERS
(S37)	PEDESTRIAN DIRECTION - OVERHEAD
INFORMATION	
(S38)	PARKING DIRECTORY - WALL MOUNT
(S39)	METAL DIRECTORY SINGLE SIZED
REGULATION	
(S40)	EXIT
TENANT	
(S41)	TENANT G - POST MOUNTED
(S42)	TENANT G - SUSPENDED
(S43)	TENANT BLADE

24' RACEWAYS
SHOWN IN RED

19' RACEWAYS
SHOWN IN BLUE

03 SLP FOOD COURT - LEVEL 110
SCALE: 1/16" = 1'-0"



02 SLP FOOD COURT - LEVEL 110
SCALE: 1/16" = 1'-0"

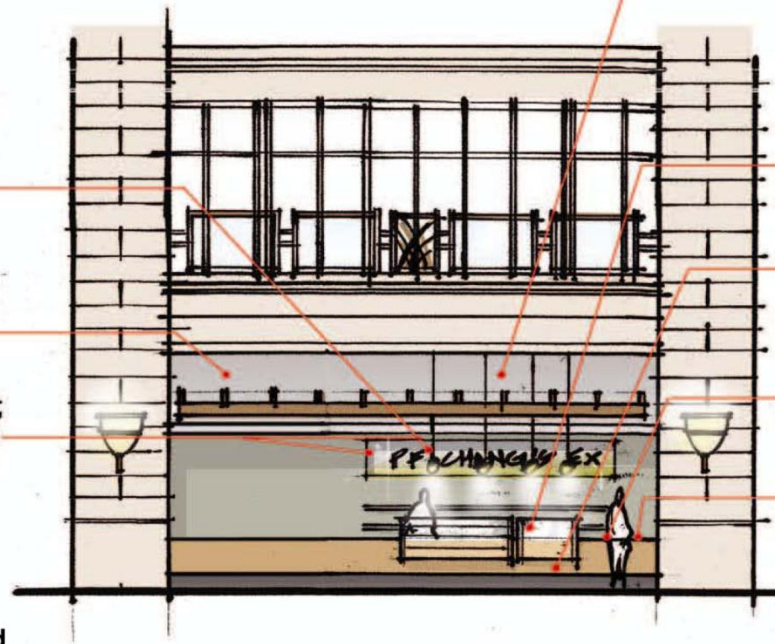
01 SIGN LOCATION PLAN FOOD COURT - LEVEL 100
SCALE: 1/16" = 1'-0"

The City Creek Food Court will allow Tenants to express their individual identity/branding through high end, elegant and sophisticated materials.

OWNER SUPPLIED
PENDANT LIGHTS

GWB & FINISH ON DEMISING
WALL; INTERIOR PARTITIONS
& FINISHES

TENANT SIGNS; BLADE-SIGNS;
MENU BOARDS PER TAUBMAN
CRITERIA



TENANT CEILING ELEMENTS &
CONCEALED EXHAUST EQUIP.

EQUIPMENT ENCLOSURES;
KITCHEN EQUIPMENT @ BACK
WALL TO BE BUILT-IN

FOOD DISPLAY AREA (SQUARE
CASE DESIGNS ONLY)

COUNTERTOP & CASEWORK
ELEMENTS; WRAP DESIGNS
PREFERRED

RECESSED OR CONCEALED
POS

MERCHANDISING DISPLAY
AREA

TENANT SUPPLIED INTERIOR

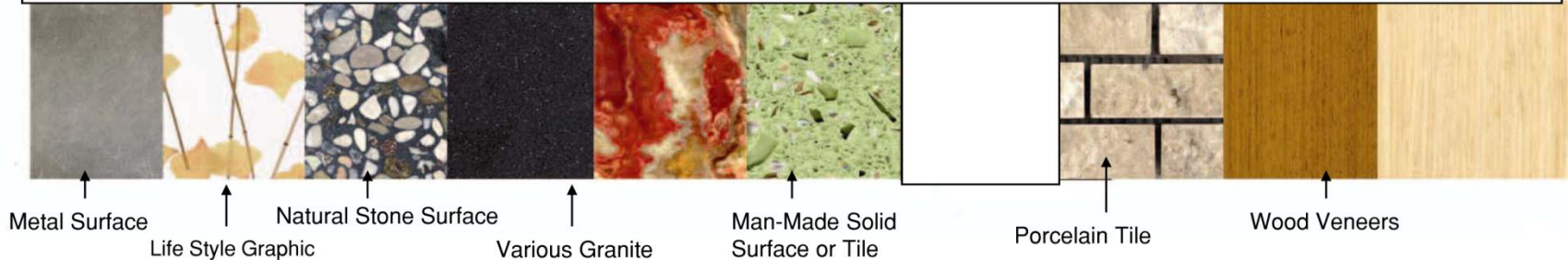
Suggested Materials:

High end, elegant, sophisticated materials including, but not limited to, granite, natural stone, tile, metals, stained or natural finished hardwoods, sustainable solid surface materials and other solid surface materials subject to Landlord Approval

Prohibited Materials:

Mirror, plastic laminate, rough sawn wood, painted drywall, stucco, and anything considered non-durable or lacking elegance, sophistication and visual quality

Tenant is to Select Materials for all Interior Features & Elements from the Examples below, or Approved Equivalent Alternatives



Metal Surface

Life Style Graphic

Natural Stone Surface

Various Granite

Man-Made Solid
Surface or Tile

Porcelain Tile

Wood Veneers

Higher Level of Finishes



Standard Finishes

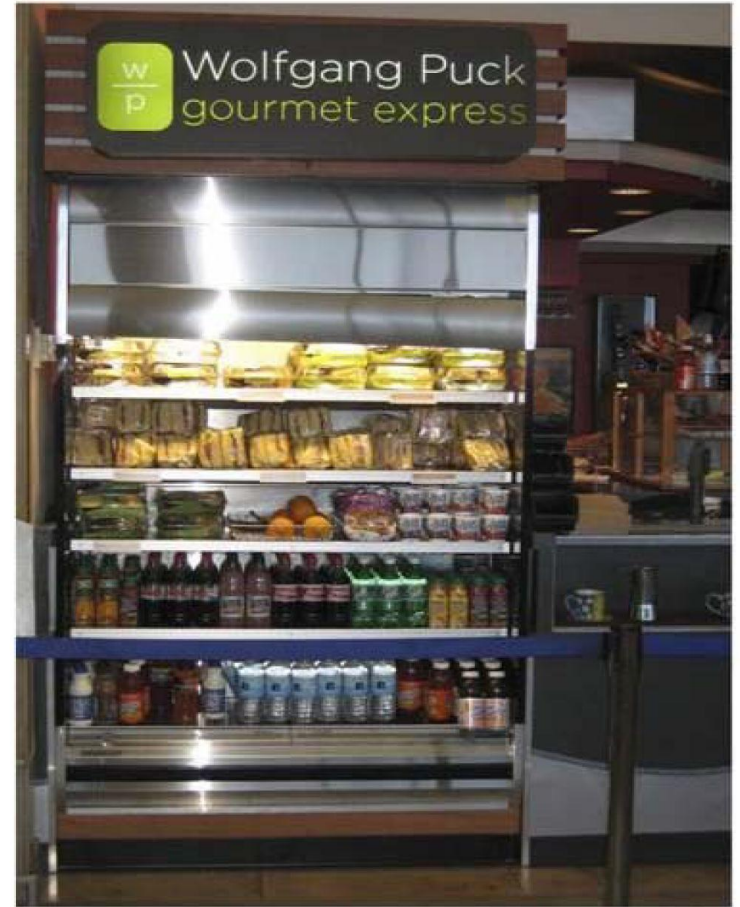


CITY CREEK CENTER - FOOD COURT - EXAMPLES OF HIGH QUALITY FINISHES



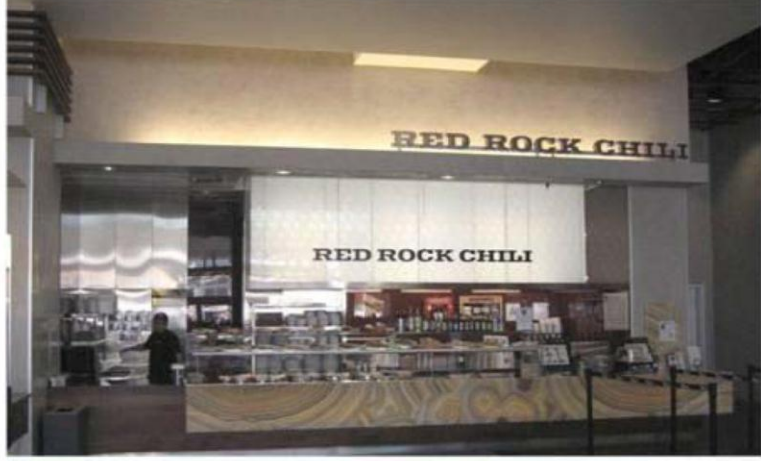
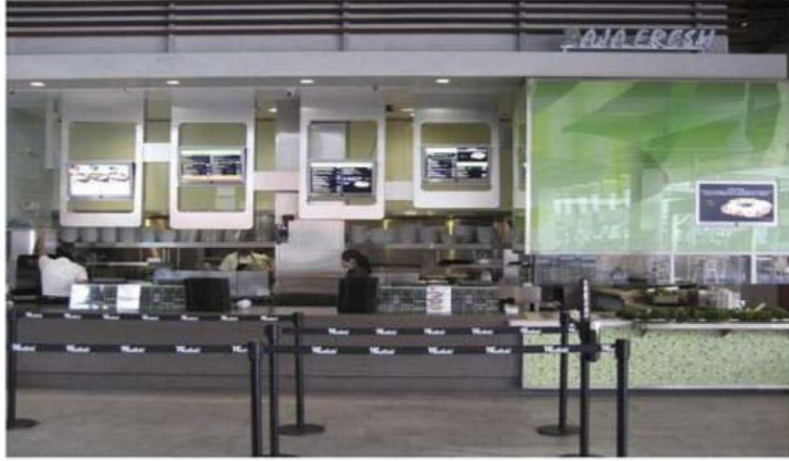
wolfgang puck gourmet express

pret a manger



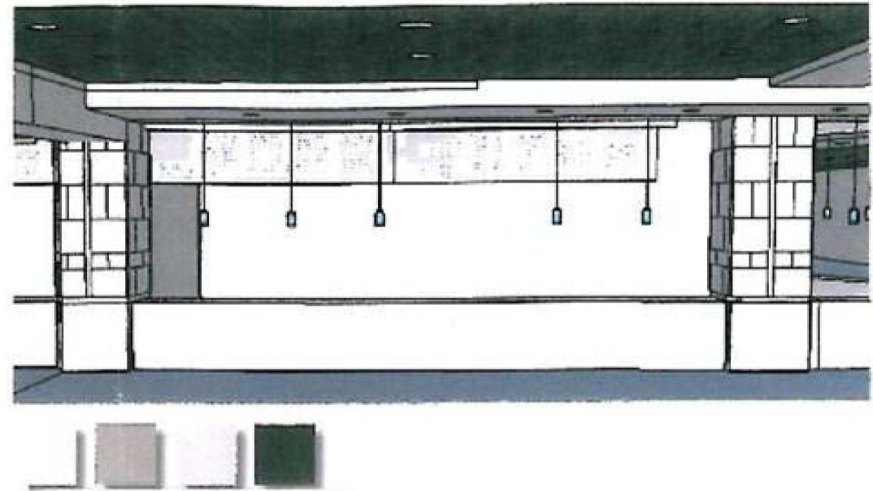
CITY CREEK CENTER - FOOD COURT - EXAMPLES OF HIGH QUALITY FINISHES

Higher Level of Finishes



Standard Finishes

CITY CREEK CENTER - FOOD COURT- EXAMPLES OF HIGH QUALITY FINISHES



THE FOLLOWING ARE SOME EXAMPLES OF FAMILIES OF FINISHES AT THE COUNTERFACE, COUNTERTOP AND BACKWALL SURFACES THAT ALLOW THE TENANT TO CUSTOMIZE IDENTITY OF THE SPACE WHILE MAINTAINING A RANGE OF MATERIAL TYPES AND COLORS THAT RELATE TO THE LARGER FOOD COURT PALETTE.

